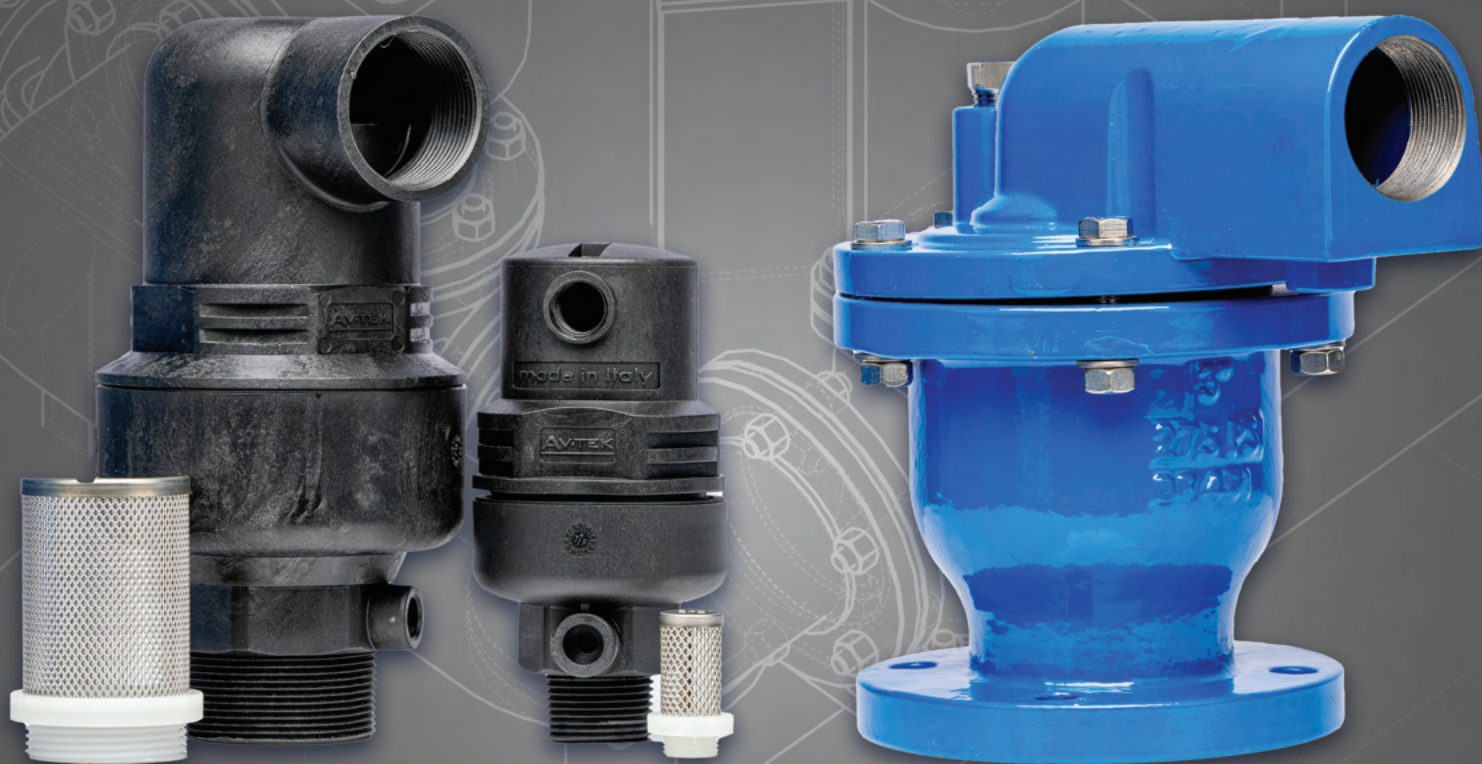




VALVES THAT REDEFINE INDUSTRY STANDARDS



# Clean Water **Air Valves** Kinetic Type

## TRIPLE FUNCTION COMPACT INTEGRATED PA VERSION

### SPECIAL FEATURES

- Single type, compact fully automatic triple function for releasing air under pressure during pipe filling and air in (anti-vacuum) during pipe emptying.
- Performances according to the requirements of EN 1074.
- Body, cover and float from plastic material.
- Special rolling gasket for reliable function.
- Exhaust supplied with female NPT threads.
- Easily disassembles for inspection and maintenance.
- NPT Male Threaded Connection.
- Fully UV-resistant
- Minimum operating pressure for water tight sealing: 3-7 psi.

### MATERIALS

**BODY:** Polyamide (PA) fiberglass reinforced

**FLOAT:** Polypropylene foam

**ROLLING GASKET:** Silicon rubber, potable water approved

**O-RINGS:** EPDM rubber, NSF 61 Certified

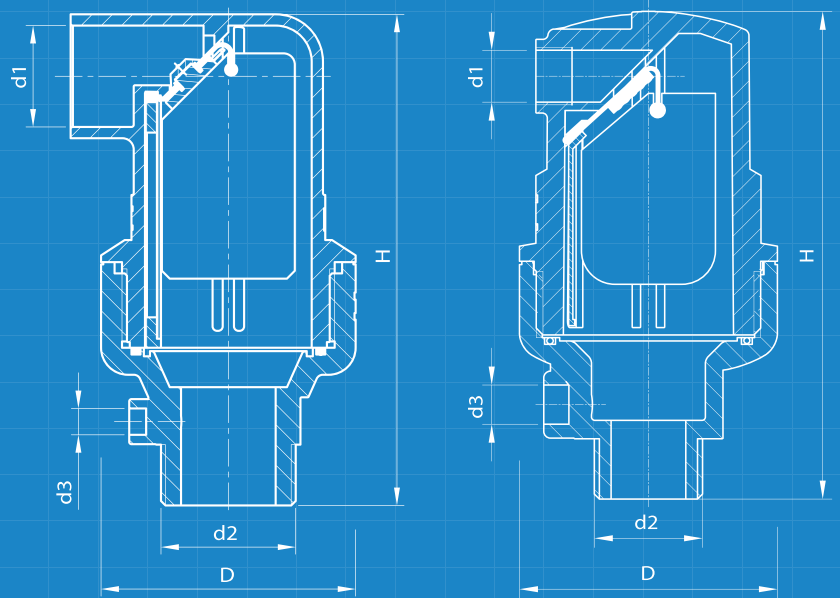


Certified to  
NSF/ANSI 61 & 372

**MODEL:** 5301 | **PSI:** 350 | **SIZE:** 1"  
Male NPT threaded connection

**MODEL:** 5302 | **PSI:** 250 | **SIZE:** 2"  
Male NPT threaded connection

d2	Pressure Range (PSI)	H	D	d1	d3	Weight(lb)
1"	3 - 350	5.6"	2.95"	3/8"	1/4"	1
2"	7 - 250	10.8"	4.4"	1" 1/2	1/4"	2.5



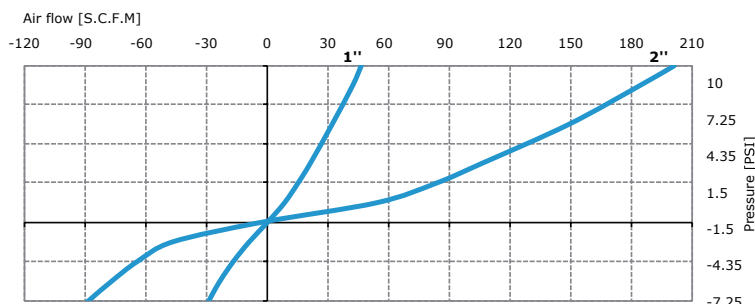
All metal, rubber, and coatings used have been designed for contact with water for human consumption, pursuant to the terms of Italian Health Ministry decree n° 174, dated 6/4/2004.

All materials used meet NSF 61 requirements.

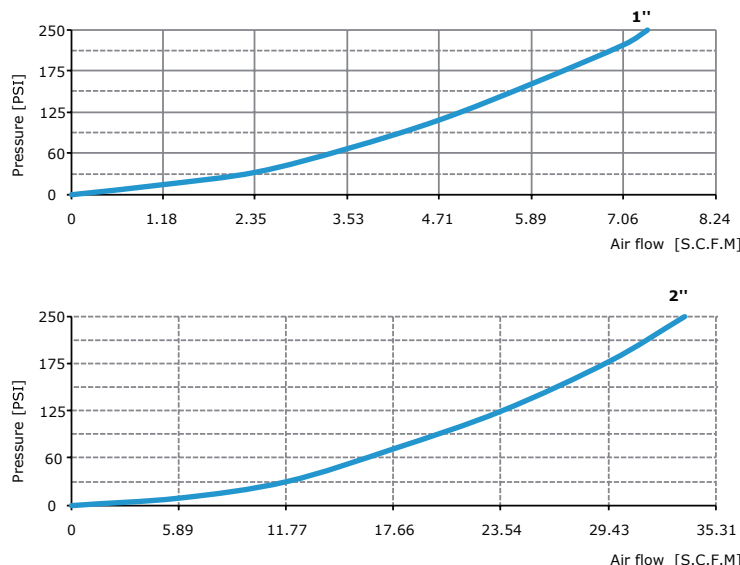


## FUNCTIONAL DIAGRAMS

KINETIC FUNCTION - AIR OUTFLOW AND INFLOW



KINETIC FUNCTION - RELEASING AIR UNDER PRESSURE



## MATERIALS

**BODY AND COVER:** Ductile iron ASTM A536-65-45-12

**FLOAT:** Stainless steel AISI16

**SEAT:** EPDM with Brass seat Retainer

**Seat Sealing:** Outlined EPDM rubber

**O-Rings:** EPDM rubber

**Bolts/Nuts/Washers:** Stainless steel 304 - 316 SST upon request.

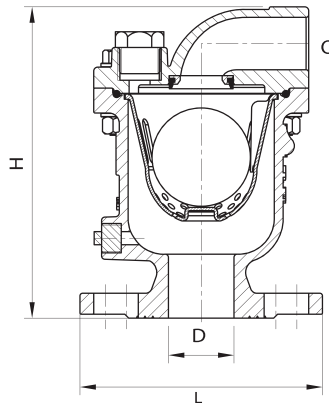
**Plugs:** 304 - 316 Stainless Steel



**Certified to  
NSF/ANSI 61 & 372**

## DUCTILE IRON SPECIAL FEATURES

- Single large orifice type, fully automatic double function for releasing air during pipe filling and bringing air in (anti-vacuum) during pipe emptying.
- Performances according to the requirements of EN 1074.
- Body and cover high quality polyamide heat powder coated (fusion bonded), coating thickness DFT 250 microns min. zero porosity (tested with 3000V), high impact resistance and cross linkage.
- Float is 316 SST
- Top cover provided with threaded tap to add air valve connection if the valve ever needs to be changed to a combination.
- Valve body provide with drain port for easy clean out and flushing purposes
- Cover has an integrated drain port to allow for easy draining of media once past the float.
- ANSI 150 Flanged connection
- Minimum operating pressure for watertight: 7 psi, Maximum operating pressure: 250 psi



## 2"

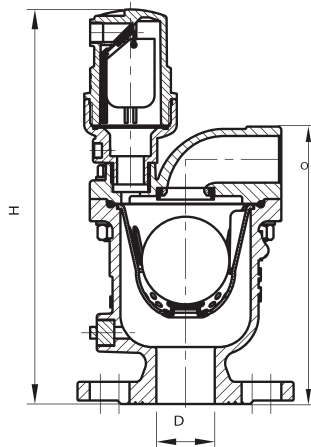
**MODEL:** 5320

**PSI:** 250

**SIZE:** 2"

Flanged connection

D	Pressure Range	H	L	O	Weight
2"	3-250 psi	9.5"/13"	7.25"	1.5" NPT	28/29 lbs



## 2"

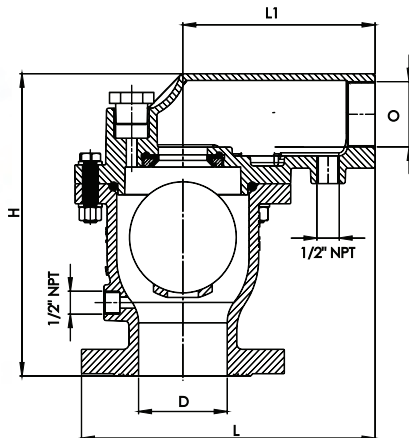
**MODEL:** 5321

**PSI:** 250

**SIZE:** 2"

Flanged connection

D	Pressure Range	H	L	O	Weight
2"	3-250 psi	9.5"/13"	7.25"	1.5" NPT	28/29 lbs



## 3"

**MODEL:** 5330

**PSI:** 250

**SIZE:** 3"

## 4"

**MODEL:** 5340

**PSI:** 250

**SIZE:** 4"

D	Pressure Range	H	L	L1	O (NPT)
3"	7-250 psi	10.7"	10.82"	7.08"	2"
4"	7-250 psi	11.88"	12.38"	7.87"	2.5"

## COMBINATION AIR VALVE

### SPECIAL FEATURES

- Double orifice type, fully automatic triple function for releasing air during pipe filling and bringing air in (anti-vacuum) during pipe emptying, releasing air under pressure.
- Kinetic function carried out by ductile iron unit, air releasing under pressure executed by PA unit.
- Performances according to the requirements of EN 1074.
- Float is 316 SST
- Body and cover high quality polyamide (Rilsan – PA11) powder coated (fusion bonded), coating thickness DFT min. 250 micron, zero porosity (tested with 3000V), high impact resistance and cross-linkage according to DIN 30677-2 and DIN 3476.
- Floats AISI 304SST.
- ANSI 150 Flanged connection.
- Minimum operating pressure for watertight: 7 psi.

### MATERIALS

#### BODY AND COVER:

Kinetic unit – Ductile iron ASTM

A536-65-45-12

Air release unit – Polyamide PA fiber  
glass reinforced

**FLOAT:** Stainless steel AISI316, 250 psi

**SEAT:** Outlined EPDM rubber

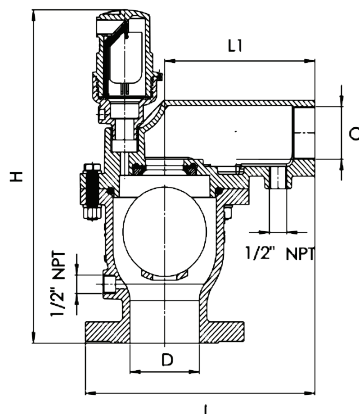
**Seat:** EPDM with Brass seat Retainer

**O-Rings:** EPDM rubber

**Bolts/Nuts/Washers:**

Stainless steel 304 – 316 SST upon request.

**Plugs:** 304 – 316 Stainless Steel



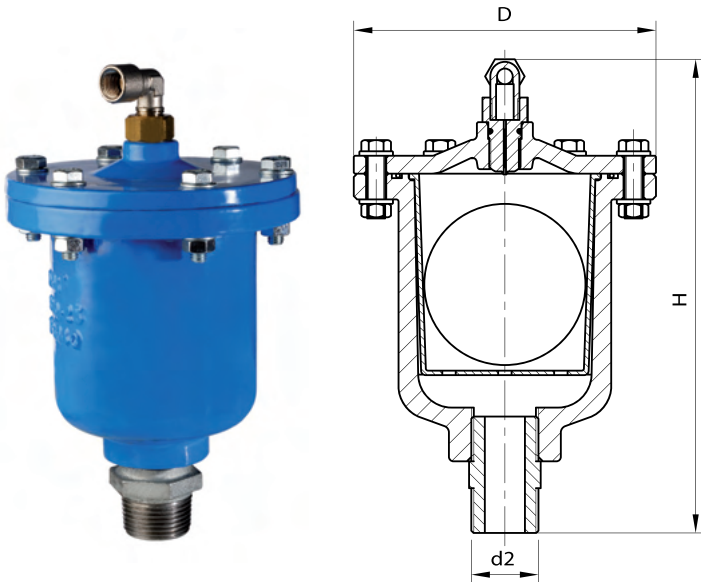
**MODEL: 5331 | PSI: 250 | SIZE: 3"**

Flanged connection

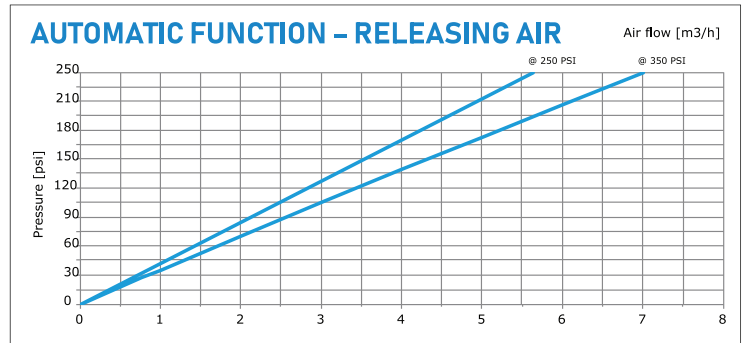
**MODEL: 5341 | PSI: 250 | SIZE: 4"**

Flanged connection

D	Pressure Range	H	L	L1	O (NPT)
3"	7-250 psi	10.7"	10.82"	7.08"	2"
4"	7-250 psi	11.88"	12.38"	7.87"	2.5"



**MODEL: 5301-DI | PSI: 350 | SIZE: 1"**  
 Threaded connection, stainless steel



d2	Pressure Range	D	H	Weight
1"	3-250 psi	9.5"/13"	7.25"	28/29 lbs

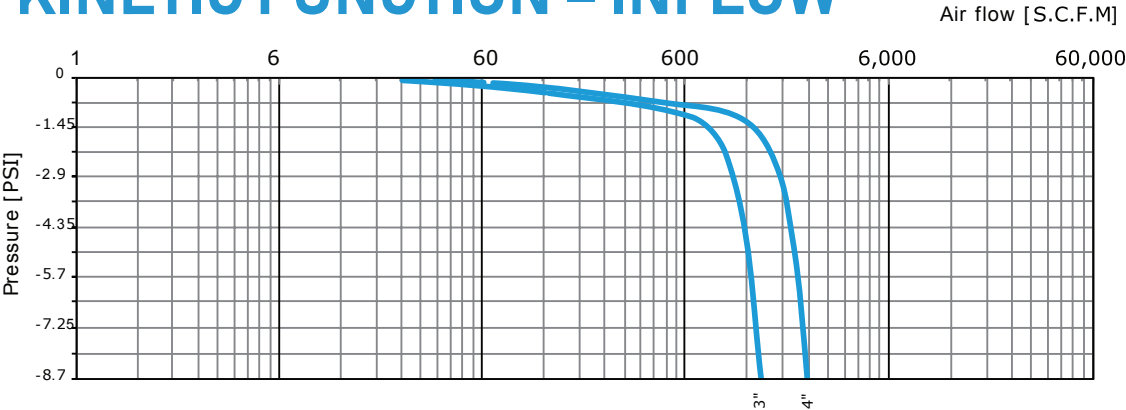
## SPECIAL FEATURES

- Single orifice type, fully automatic single function for releasing air under pressure.
- Performance according to the requirements of eN 1074.
- Body and cover high quality polyamide (Rilsan – Pa11) powder coated (fusion bonded), coating thickness DFt min. 14 mils, zero porosity (tested with 3000v), high impact resistance and cross-linkage according to DIN 30677-2 and DIN 3476.
- Float from non-corrosive material, fully rubber lined.
- Special basket to keep float in optimal position during operation.
- Minimum operating pressure for watertight: 7 psi

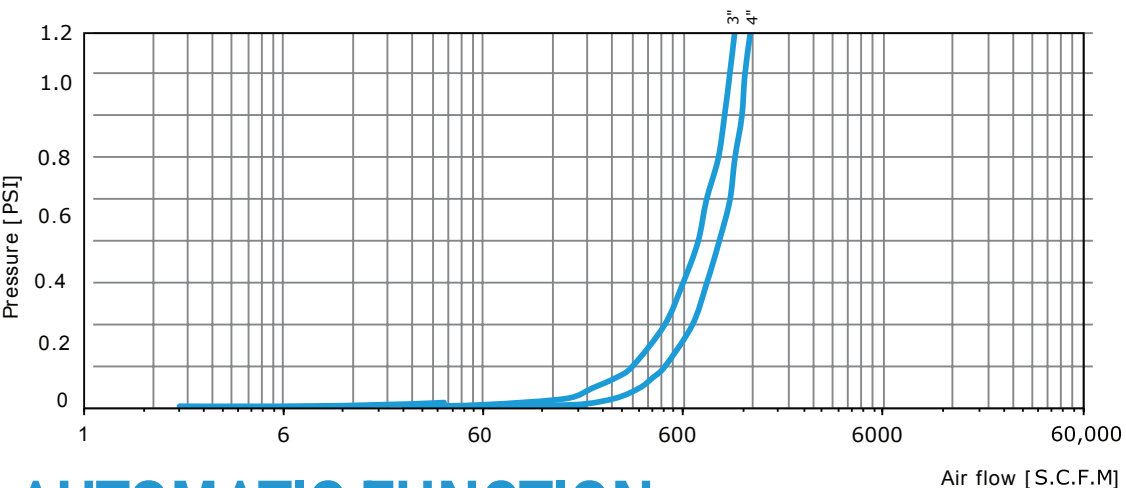
## MATERIALS

- BODY AND COVER:** Ductile iron EN-GJS-400-15 / EN 1563 (former to DIN GGG40)
- FLOAT:** Polyamide, fully EPDM rubber lined – PN 10/16  
 Stainless steel 1.4301/ EN ISO10088  
 (equivalent to AISI304), fully rubber lined – PN 25
- BASKET:** ABS
- ORIFICE:** Brass
- BOLTS/NUTS/WASHERS:** Stainless Steel 304
- NIPPLE:** Galvanised malleable iron (stainless steel on request)

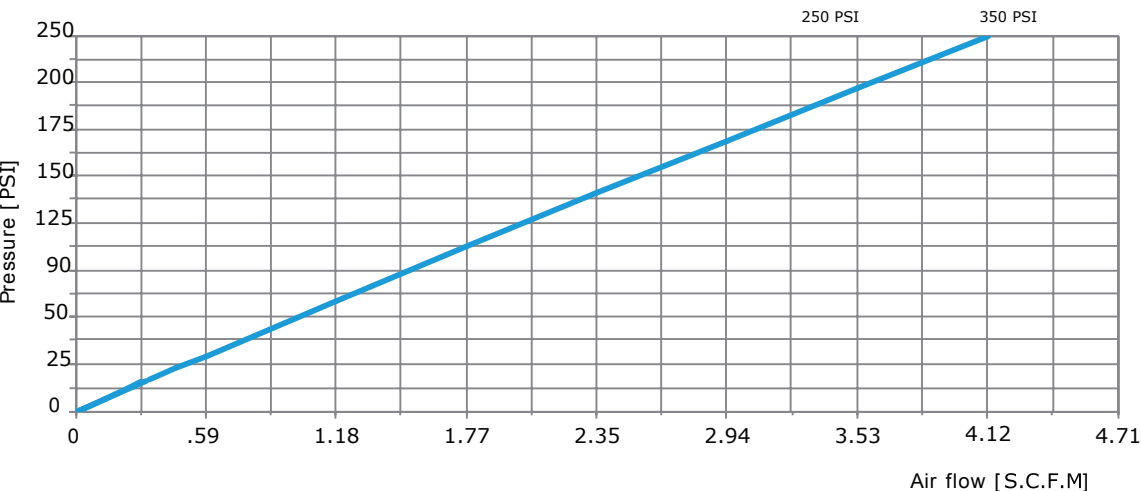
## KINETIC FUNCTION – INFLOW

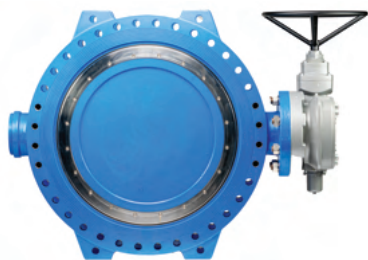


## KINETIC FUNCTION – OUTFLOW



## AUTOMATIC FUNCTION – RELEASING AIR UNDER PRESSURE





775W, 1000N, Suite 150  
 Logan, Utah 84321, USA  
 Phone: 385-325-2504

Av-Tek® Inc. offers modern solutions for the persistent problems facing water users, plant operators, and engineering firms. Our technology far exceeds the current options in the marketplace, and clients are quickly realizing Av-Tek® is setting a new standard for quality, performance, and craftsmanship.

The Av-Tek® DEX double eccentric butterfly valve is a primary example of superior design and quality. Exceeding the requirements of AWAA C504, this valve simply just works, even years down the road, you can rest assured there is not a better valve on the market today.

The Av-Tek® VRX Plunger Valve has been engineered and designed for absolute control; specifically, for water applications. The VRX accompanied with an electric motor operator can function as a critical isolation, pressure, and control valve without the fear of cavitation damage.

The Hydrant Air Exhaust or HAX, is a patent pending device that allows you to make your system more efficient by removing the air out of your lines, and easily checking line pressure through any fire hydrant!

The Av-Tek® Model 4900 Ball Check Valve has a 100% opening port, there is virtually no head loss when the valve is fully open. Ball Check Valves are a resilient seated check valve used in wastewater lift stations. Different weighted balls allow for this to be adjusted to your application.

The Av-Tek® Resilient Seated Butterfly Valves are a crucial part of nearly every application, and the advanced design allows for quick replacement of seats.

info@AvTekValves.com  
 www.AvTekValves.com

Copyright 2019-2025 Av-Tek © Valves